



Care Act

Shobha Asar–Paul
Dudley MBC

Programme

9:45 – 10:15 Registration

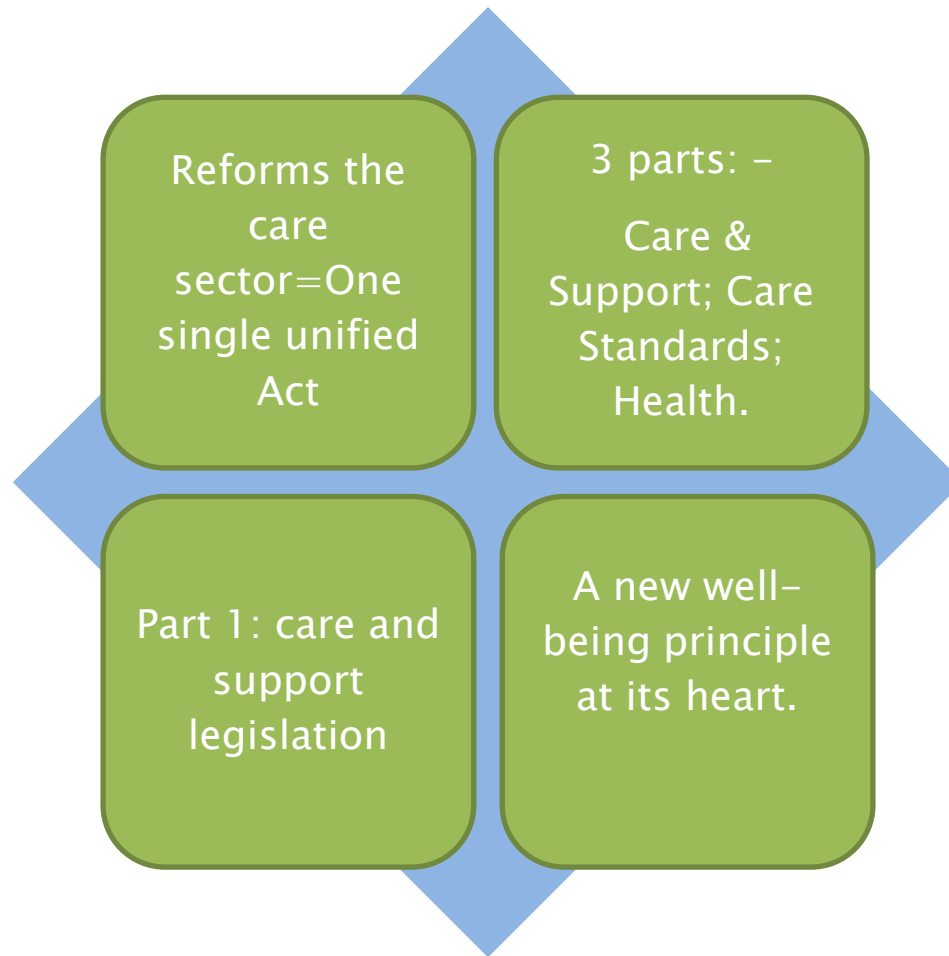
10:20 Introduction

10.30 Workshop Specific Presentation
Discussion /Workshop

11:45 Overview of Care Act



Big Picture

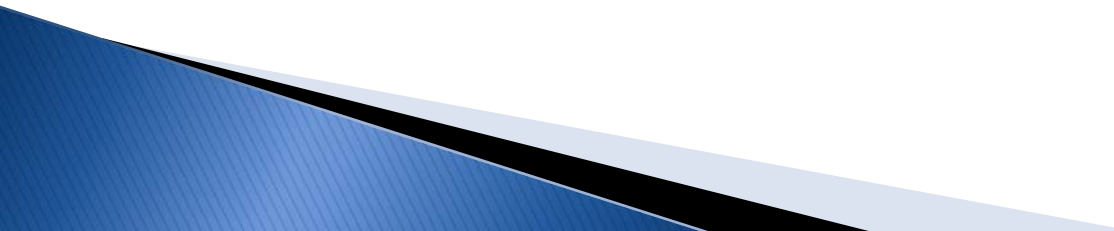


What's it about ?

For adult social care to respond to demographic and financial challenges it must help people to stay well and independent.

- ▶ Promote people's **wellbeing**
- ▶ Enable people to **prevent** and **postpone** the need for care and support
- ▶ **Put people in control** of their lives so they can pursue opportunities to realise their potential

Key duties

- ▶ Prevention
 - ▶ Integration
 - ▶ Information and Advice
 - ▶ Diverse markets
- 

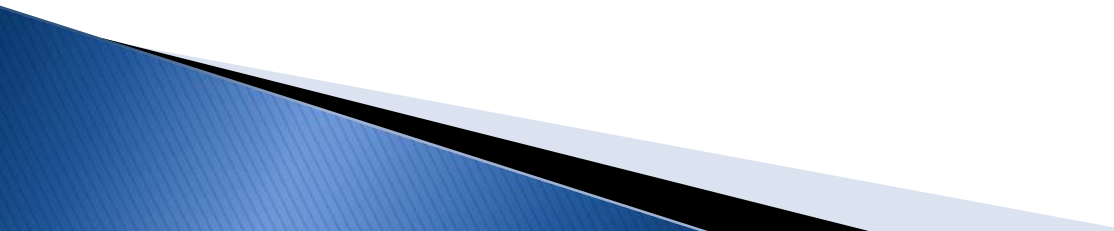
Headlines

- ▶ People's well-being will be at the heart of every decision– an asset based approach.
- ▶ Carers rights on the same footing as those they care for–a carer's assessment should focus on the impact of caring and on the outcomes they want to achieve.
- ▶ **NHS and Care** services becoming more integrated
- ▶ **Preventing and delaying needs for care and support**
- ▶ **National threshold for eligibiity**
- ▶ Quality information and advice to help people navigate complex systems and support choice and control
- ▶ **Universal Deferred Payment** scheme from April 2015

Headlines 1

- ▶ **Promoting the diversity and quality of the local care market, shaping care and support around what people want**
- ▶ **Puts adult safeguarding on a statutory footing for the first time**
- ▶ **Young adults receive care and support during transition to adult care services**
- ▶ **Reforms what and how people pay for their care and support– cap on care.**
- ▶ **Most financial support for those with greatest care needs and least in savings/assets.**

Funding reforms– from 2016

- ▶ £72,000 cap on care costs
 - ▶ Zero cap if disabled from childhood
 - ▶ Cap does not cover board and lodgings nor any care costs above the rate the Council would pay.
 - ▶ Those with £118,000 or less in 16/17 will get financial help for residential care.
- 

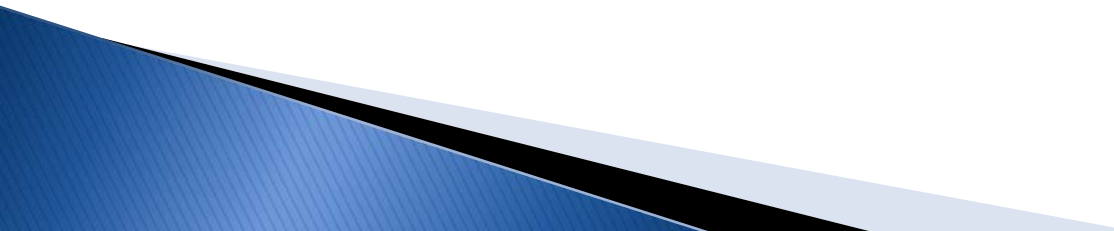
Our approach

- ▶ The implementation of the Customer Journey in line with the principles of the Care Act- wellbeing, support and prevention embedded throughout the Customer Journey;
- ▶ the Better Care Fund and integrating services. The schemes associated with the BCF again are completely linked to Care Act requirements and local Health and Wellbeing priorities.
- ▶ Care Act demand modelling to understand implications on resources etc
- ▶ Training for social care staff.
- ▶ Outcomes of discussions will further inform the implementation.

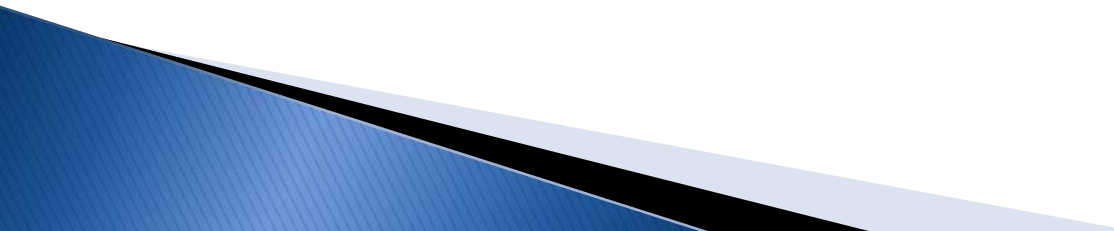
Implications for Dudley

- ▶ Advice and information for self-funders; on funding reforms
- ▶ Impact on providers: transparency; choice and diversity
- ▶ Projected increase in demand for assessments and reviews – carers, self funders
- ▶ Impact on capacity, workforce, finance – potential increase in demand

Next steps

- ▶ Elected member workshop in Nov/Dec
 - ▶ Modelling using national tools and resources to forecast demand and costs
 - ▶ Final guidance and regulations
 - ▶ Skills for Care and Department of Health resources
- 

Care Act implementation timeline

- ▶ Final regulations and statutory guidance published (October 2014)
 - ▶ Implementation of new legal framework commences (from April 2015)
 - ▶ Financial support/Cap on care costs/Care accounts (From April 2016)
- 

Workshop questions

- ▶ **Your thoughts...** Your concerns & what opportunities can you see with the introduction of the Care Act?
 - ▶ **Moving forward...** What needs to be put in place for the Care Act to really improve people's lives in Dudley Borough?
- 